

GO TH Logger - Single Use






Versatile temperature and humidity logger

Single Use Programmable digital data logger

The Emerson PDF single use Temperature & Humidity Data Logger is widely used in food, medicine, logistics, blood, chemicals, electronics and other industries. It displays instant temperature, relative humidity, date & time on LCD. After the data recording is completed, connect the data logger to your computers USB port, without installing any software or drivers, the data logger will generate a report in PDF format automatically. The data can be displayed in summary, tabular and graph view. Using the additional software kit, the recorded data can be exported to spreadsheet Excel format.



GO TH Software

-  Programmable
-  Temperature & Humidity
-  LED screen to view data
-  Easy to use
-  Economical



Technical Specifications

Operating Humidity Range:	0%RH to 100%RH; ± 3%RH Accuracy
Humidity Resolution:	0.1%RH
Temperature Range:	-22°F (-30°C) to 158°F (70°C)
Temperature Accuracy:	±0.5°C,
Temperature Resolution:	0.1°C
Memory:	24,000 Readings
Recording Interval:	1 minute to 24 hours
Start Delay:	1 minute to 4 hours
Shelf Life:	Up to 15 months



File Created Date: 2019/10/14 13:45:38
Data Report

EMERSON™

Note: All times shown are based on 24-Hour clock [YYYY/MM/DD HH:MM:SS]

Device Configuration		Serial Number	
Start Delay: 0 min	Interval Time: 1 min 0 sec	TH 00000000	V1.02
Temp. Limit: --/--	Humidity Limit: --/--		

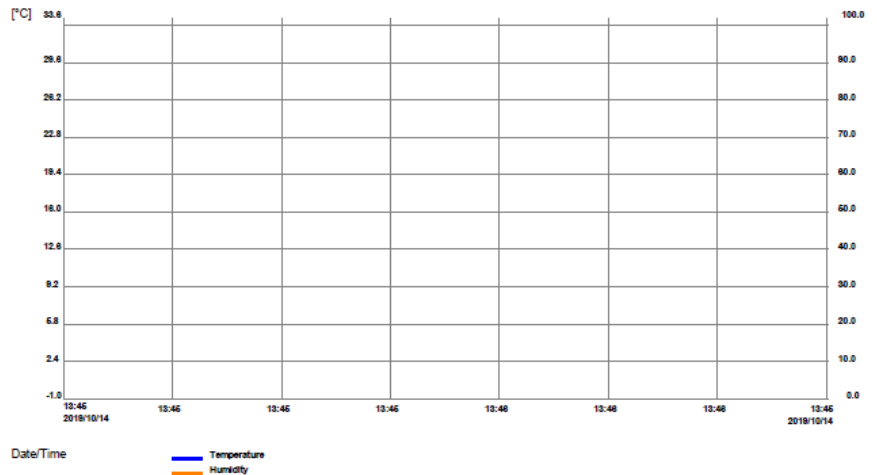
Logging Summary			
Max Temp.:	32.6°C	Max Humidity:	47.7%
Min Temp.:	32.6°C	Min Humidity:	47.7%
Average Temp.:	32.6°C	Average Humidity:	47.7%
MKT:	32.6°C	Total Time:	0 day 0 hr 0 min
		Data Points:	1

Note: None

Operating Instructions

1. Press the button to start, press and hold the START button for 5 seconds, the LED light flashes 2 times, flashes 10 times, and the REC is displayed in the upper left corner of the screen, indicating that the recorder starts working and records data.
2. After the data record is full, the recorder automatically stops working.
3. During the operation of the recorder, if the computer is connected, the recorder will automatically stop recording and generate a data report.

EMERSON Graph



Contact Information

+61 (02) 9795-2800
AUSalesClimate@Emerson.com

Precision Monitoring

Phone: +64 9 379 0131
sales@precisionmonitoring.co.nz
www.precisionmonitoring.co.nz

